

Part Number	Application Information	Brand and Packaging Date Code	Product Date Code	Federal-Mogul Sold Date Beginning
515054	GM Truck: Front Chevrolet Silverado 1500 (Classic) (2WD), 2007 Chevrolet Silverado 1500 (2WD) (16" Wheel), 2005-2006 Chevrolet Silverado 1500 (2WD) (6 Stud), 2001-2004 Chevrolet Silverado 1500 (2WD), 1999-2000 GMC Sierra 1500 (Classic) (2WD), 2007 GMC Sierra 1500 (2WD) (16" Wheel), 2005-2006 GMC Sierra 1500 (2WD) (6 Stud), 2001-2004 GMC Sierra 1500 (2WD), 1999-2000	National®: A or B06054 through A or B06361 A or B07009 through A or B07324 CARQUEST® Premium (BGS/Blue): A or B06054 through A or B06361 A or B07009 through A or B07324	BBC, BBJ, BBK, BBL, BBM, BBZ, BC1, BCC, BCD, BCF, BCG, BCH, BCC, BCR, BCD, BC2, BC3, BC5, BDF, BER, BET, BEU, BEV, BFB, BFE, BFF, BFV, BFW, BFX, BJK, BK1, BK2, BK3, BLG, BLK, CAO, CAP, CA5, CBA, CBB, CBC, CCP, CCR, CCS, CDC, CDE, CDF, CDI, CEX, CEY, CEZ, CE2, CE5, CFA, CFB, CFC, CGZ, CG1, CG2, CHB, CHC, CH2, CIG, CIH, CIJ, CKO, CKP	February 17, 2006
515059	GM Truck: Front Chevrolet, GMC G2500 (2WD) (H/D Suspension), 2003-2005 Chevrolet, GMC G3500 (Excludes H/D Suspension), 2003-2005	National®: A or B07332 through A or B07337 CARQUEST® Premium (BGS/Blue): A or B07332 through A or B07337	CJP, CJQ, CJR	November 16, 2007
515060	GM Truck: Front Chevrolet, GMC G3500 (H/D Suspension), 2003-2005	National®: A or B07332 through A or B07337 CARQUEST® Premium (BGS/Blue): A or B07332 through A or B07337	CJR	November 16, 2007

For the listed vehicles, visual inspection can be performed and determination may be made to confirm whether or not the suspect hub assemblies have been installed. For proper identification,

1A. On 4x4 vehicles, while the vehicle is parked on the ground, remove decorative chrome wheel trim (if present). Remove retaining ring clip from outboard end of hub. Pull hub lock mechanism outward to remove – this may require some wiggling of the part but **NO TOOLS** should be used during this particular task. Observe a yellow, green or blue paint mark at the bottom of the hub lock cavity in hub (**Figure 1**). If the paint mark is present, the hub assembly is good. Reverse the above procedure for installation. Refer to the Ford service manual for additional information on service procedures of hub locks. If the paint mark is not present, raise vehicle on an approved hoist and go to step 2.

1B. On 2x4 vehicles, the inspection requires vehicle to be raised on an approved hoist first. The hub assembly is good if a yellow, green or blue paint mark is observed on the grease cap located on the inboard side of the steering knuckle (**Figure 2**). Wipe the grease cap clean for proper viewing. If the paint mark is not present, go to step 2.

2. Remove wheel.
3. Remove brake rotor.
4. Clean rust from hub assembly face (**Figure 3**) to check for the date code stamping (**Figure 4**).

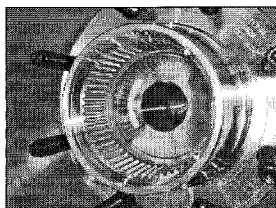


Figure 1

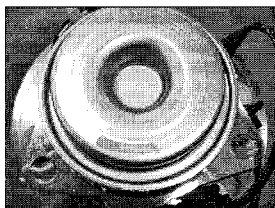


Figure 2

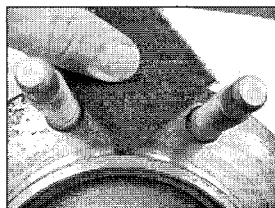


Figure 3

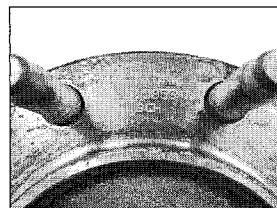


Figure 4

If the identified hub assembly has been installed on a vehicle, Federal-Mogul will stand behind any appropriately documented inspection or labor claim which may result from this safety recall.

For proper reimbursement of inspection, or product and labor, please contact your Federal-Mogul sales representative.

To assist you with customer notification, Product Safety Recall postcards, Form# N073070, are available from Federal-Mogul. For additional information, contact your local sales representative or call 1-877-489-6659 (within the United States) and a Federal-Mogul representative will assist you. Canadian technicians may call 1-800-268-7445.